

# floAt's Mobile Agent

## User documentation

Based on version: 2.1.0.53 Beta1 (Reloaded)

Author: ToddJG

Revision History:

<b>Last Edited By</b>	<b>Last Edited On</b>
ToddJG	19-January-2004

## Table of Contents

User documentation .....	1
Table of Contents .....	2
Chapter 1: Basic Connection and Setup Guide.....	3
Connection Basics.....	3
Native Bluetooth Connection & Setup .....	4
Native Infrared Connection & Setup .....	5
Serial/Virtual Connection & Setup .....	6
Cable connection:.....	6
IrDA Adapter: .....	7
Bluetooth Adapter:.....	7
Appendix A: Phone and Computer Indicators .....	10
Appendix B: Acknowledgements .....	11

# Chapter 1: Basic Connection and Setup Guide

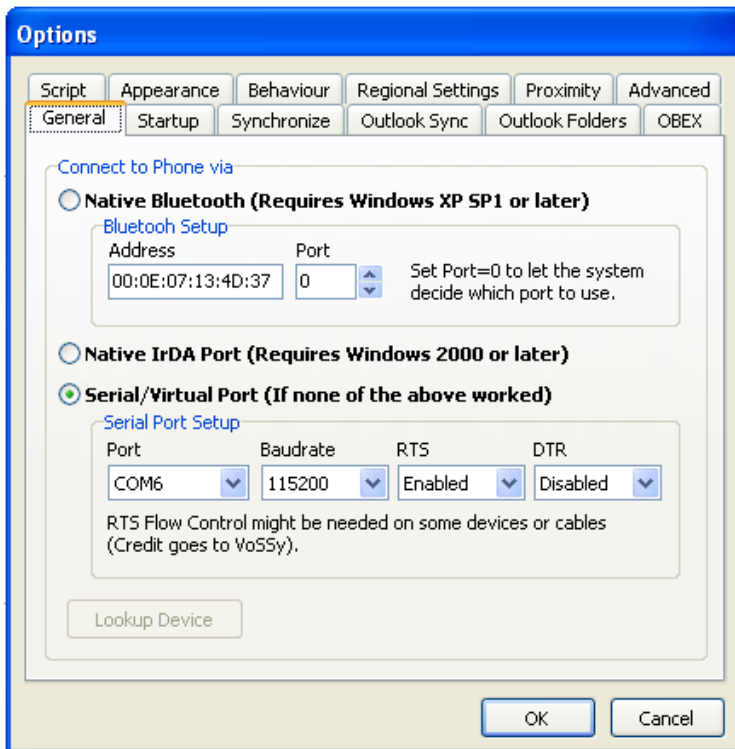
## Connection Basics

There are three basic ways to connect your phone to fma. These are via Native Bluetooth, Native Infrared and Serial/Virtual connection. This section will cover the basics of connecting your phone to fma using these various connection types. The matrix below is a matrix of operating systems and connection types with comments as necessary.

	Native Bluetooth	Native Infrared	Serial
Windows 98	No	No	Yes
Windows ME	No	No	Yes
Windows 2000	No	Yes	Yes
WindowsXP	Yes*	Yes	Yes

\*NB: Native Bluetooth requires Microsoft Bluetooth Drivers and XP SP1 or later.

Within the serial connection, there are three different types of connections methods (hardware options) as well. There is a direct serial connection using a cable, virtual serial connection using Bluetooth and virtual serial connection using Infrared. Each of these sections will be explored below. There will be some important information below about specifics to each connection type, so please be sure to read the appropriate section.



Initial Setup options are set in this dialog box, found under Tools > Options.

## Native Bluetooth Connection & Setup

As stated above, native Bluetooth can only be used with Windows XP, with Service Pack 1 or higher and with Microsoft's Bluetooth drivers. If you have SP1, you will need to download a patch. (The patch is Q323183 for SP1. See more at <http://support.microsoft.com/default.aspx?kbid=323183>, download [http://download.microsoft.com/download/whistler/SP/1.1.1/WXP/EN-US/bt\\_stack\\_rtm.exe](http://download.microsoft.com/download/whistler/SP/1.1.1/WXP/EN-US/bt_stack_rtm.exe)) The only thing you need to know to connect via Native Bluetooth is the device address of your Bluetooth-enabled phone.

The "quick flow" for Bluetooth setup:

1. Pair the computer and phone.
2. Enter the device Address of the phone into the Tools > Options > General section of fma
3. Set port to 0

Before we get started, check to ensure that Bluetooth is enabled on the phone and set to Visible Mode. If Bluetooth is on, you will note the Bluetooth icon next to the signal strength indicator (shown above right). Under the Connect on the phone, select Bluetooth. The first menu item should be Turn On. Select this. The Bluetooth is now active. Next, in this same menu, select the Options menu item. In that menu, choose Visibility. Ensure that the radio button labeled "Show Phone" is selected. If the phone is visible, there will be a small "greater than" sign next to the Bluetooth logo (as shown at right). You are now ready to pair the phones.



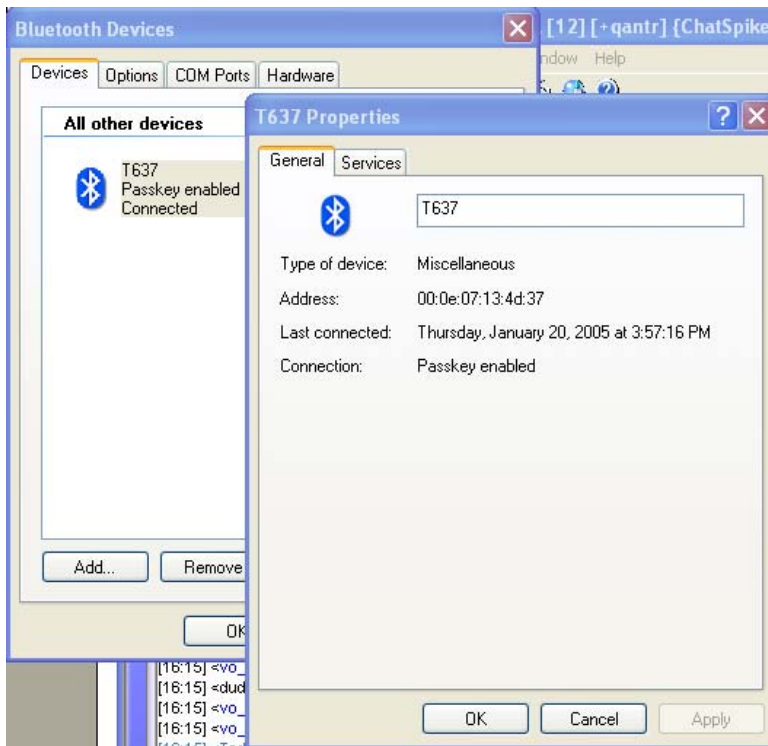
Step 1 – Pair the phone and computer.

In Windows, from the Start Menu select Control Panel > Bluetooth Devices. On the devices tab, choose Add. The Wizard will go step by step to pair your phone.

Step 2 – Obtain the Device address of your phone.

In the Control Panel for Bluetooth devices, you will see your phone listed in the Device Tab. Highlight your phone and click on the properties button. You will see your Device Address there.






The address is 6 hex pairs separated by colons (example: 00:0e:07:13:4d:37). In the Tools > Options dialog in fma, select the radio button next to the “Native Bluetooth” connection type and enter this number.

Step 3 – Set the Port Number to 0  
 Setting the port number to zero will allow the computer to set the port. This is advised. Choose OK button to exit and save your settings.

Select Phone > Connect

in fma to connect your phone. You can also click the Toggle Connect button

() in the fma toolbar. You will see the Bluetooth connection activity on your phone. The Bluetooth icon will have a “double arrow” indicating Bluetooth communication is taking place between your phone and the computer (as shown at right).



### Native Infrared Connection & Setup


This is probably the easiest connection method. However, it is important to note that this connection method does NOT support OBEX File browsing. This means that you will not be able to download pictures and ringtones, pictures or themes from your phone. All other activities are supported.

The “quick flow” for Infrared setup:

1. Install Infrared adapter
2. Align Phone and Computer

Before we get started, you need to ensure that your infrared is enabled on the phone. If Infrared is on, you will note the Infrared icon next to the signal strength indicator (shown at right). To do this, go to the Connect menu on



your phone, and select "Infrared Port". Select the ON radio button. Simply align the infrared device on your computer with the infrared device on your phone. In fma, under Tools > Options select the Radio Button next to Native IrDA Port. Select OK to exit and save your settings. Select Phone > Connect in fma to connect your phone. You can also click the Toggle Connect button (  ) in the fma toolbar.

### **Serial/Virtual Connection & Setup**

This option has several options, but they all function largely the same. You can connect with a cable, with a Bluetooth dongle using Widcomm drivers, or with an IrDA adapter. For all methods, you will need to install the drivers for your device.

The "quick flow" for Serial/Virtual Connection setup:

1. Install device (cable, IrDA or Bluetooth) drivers
2. Enter COM Port and communication settings in fma


#### Cable connection:

There are two cable types that can be used, USB and Serial.

For a USB cable, you need to install the cable drivers first so that windows XP can recognize the cable and assign a COM port to the cable.

To install the cable simply insert the cable in the USB, when new hardware found wizard shows up and asks for the location of the drivers then give the path of the CD-ROM that came with the Cable. (If you don't have the CD then go to [www.sonyericsson.com](http://www.sonyericsson.com) and get the drivers of the cable downloaded and give that path). When windows finish with the installation of the cable restart machine. To confirm that the Cable is installed successfully go to Start > Settings > Control Panel > System > Hardware (Tab) > Device Manager.

Expand Ports (COM & LPT) [Make sure that the Cable is attached to the USB] You will see a COM(X) having the name of your cable associated (Where X is the number of the COM port i.e. COM3 or COM4.) Note that number of that COM port.


In fma, go to Tool > Options, Under the General tab select the Associated COM port with the cable noted above. Cables tend to be fairly slow, so you may have to experiment with the baudrate. 9,600 is a safe baudrate to test. Once it connects at that speed, test higher speeds. Set RTS to Enabled and DTR to disabled. Sometimes, these settings need to be set to Handshake. Try that if these first settings do not work. Select Phone > Connect in fma to connect your phone. You can also click the Toggle Connect button (  ) in the fma toolbar.

For a serial cable, which plugs directly into the serial port, the process is a little different. You simply must plug the phone into the cable and plug the cable into your serial port. The port number should be labeled on your computer. Enter that port into fma under Tools > Options on the General tab. If that does not work, try other Port numbers. It is usually COM1 or COM2. Cables can be slow,

so set to slowest baudrate. Start with RTS Enables and DTR Disabled. If you have problems, you may need to try different combinations of these.

### IrDA Adapter:

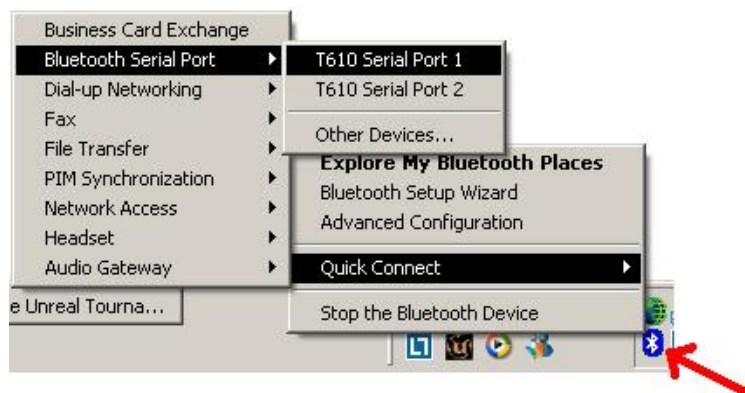
Configuring the IrDA adapter is very similar to the Cable above. Some problems have been reported using IrDA adapters with Windows 98. This should be noted. Simply install your IrDA adapter and determine its COM port assignment as demonstrated in the Cable connection guide above. *Refer to the Native IrDA Connection guide above also to understand activating the Infrared service on your phone.* Then, align the devices. Select Phone > Connect in fma to connect

your phone. You can also click the Toggle Connect button (  ) in the fma toolbar.

### Bluetooth Adapter:

#### **First**

Let's activate your Bluetooth serial by right clicking on the Bluetooth icon> Quick connect > Bluetooth Serial port > serial port.



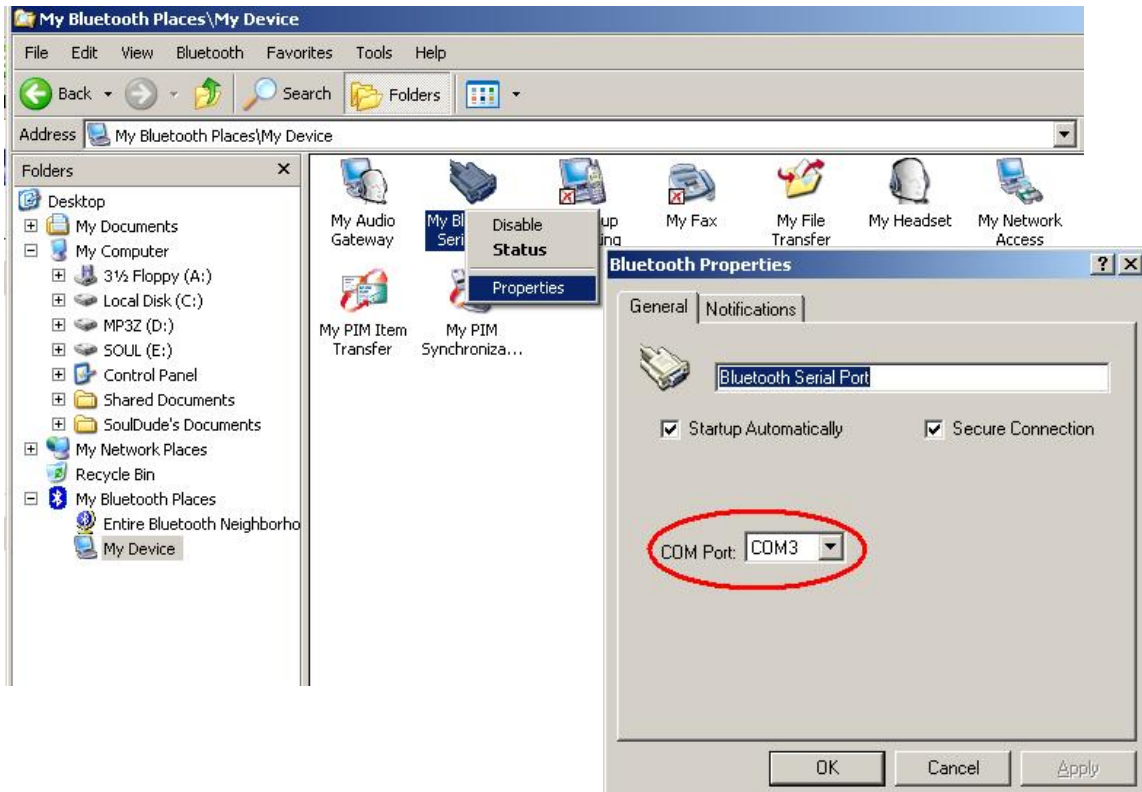
Select a serial port to connect. If these are not available, you need to enable the Virtual Serial service. To do this, right click on the Bluetooth icon on your taskbar and select "Bluetooth Setup Wizard". Choose the option that indicates you want to find a device and use its service.

Click next. The Bluetooth Configuration Wizard will then return a list of devices. Your phone should be one of them. *If not, refer to the Native Bluetooth connection guide to understand how to activate the Bluetooth service on your phone and make your phone visible.* Select your phone and click next. The next window is a list of available services. Click on Serial Port 1 (or 2, it does not matter) and select next. Now, the Serial Port should appear as in the above instruction.

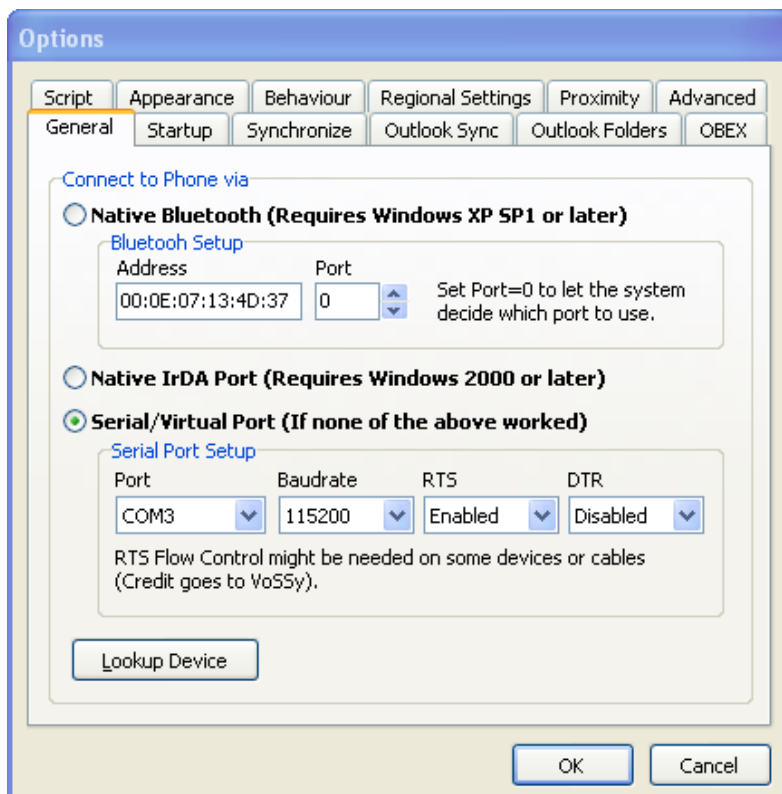
#### **Second**



Then you go to explorer and configure your serial port connection.




Right click on the Bluetooth Serial Port that you just created and select Properties from the popup dialog box. Now you see on which com port your serial port is set. This example shows COM3 as the port.





Now, in fma, under the Tools > Options dialog on the General Tab, enter that Serial Port number. Bluetooth operates at high baudrates. I personally use 115,200. You should set RTS to enabled and DTR to disabled. Select OK to save your changes and exit.

Select Phone > Connect in fma to connect your phone. You can also click the

Toggle Connect button (  ) in the fma toolbar. Your Windows Bluetooth icon



looks like this () when your Bluetooth is active, but not connected. This is what your Windows Bluetooth icon should have looked like until now. Your Windows Bluetooth icon should now look like this (). Your phone should display your Bluetooth connection. *See Appendix A for a picture of the phone's display of Bluetooth connection state.*

You should now be connected to fma and should be ready to explore some of its great features.

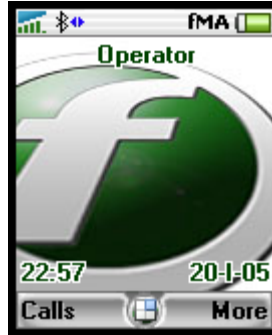
## Appendix A: Phone and Computer Indicators



**Bluetooth On  
Indicator**



**Bluetooth Visible  
Indicator**



**Bluetooth Active  
Indicator**



**Infrared On  
Indicator**



This is the Bluetooth ready icon in Windows. It is usually displayed in the taskbar. It means that your Bluetooth device is ready for use.



This is the Bluetooth active icon in Windows. It is usually displayed in the taskbar. It means that your Bluetooth device is in use.



This is the Bluetooth disconnected icon in Windows. It is usually displayed in the taskbar. It means that your Bluetooth device is not connected to your PC.



This is the Toggle connect button in fma. It toggles the connection state of your phone with fma.

## **Appendix B: Acknowledgements**

The following people contributed to this documentation:

vo\_x: editorial help and his wise counsel

Alex Yeo: graphics

Souldude: BT virtual serial instructions were basically taken from his post in the forums